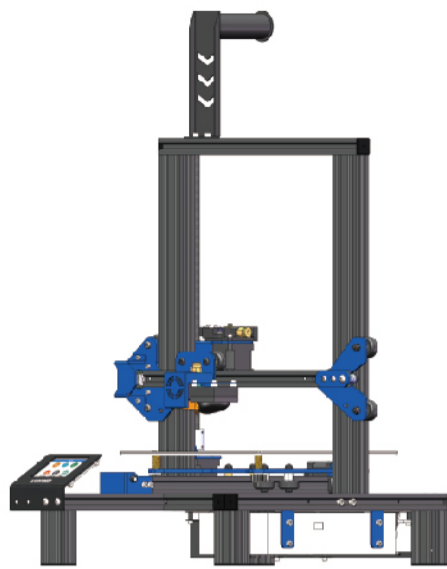
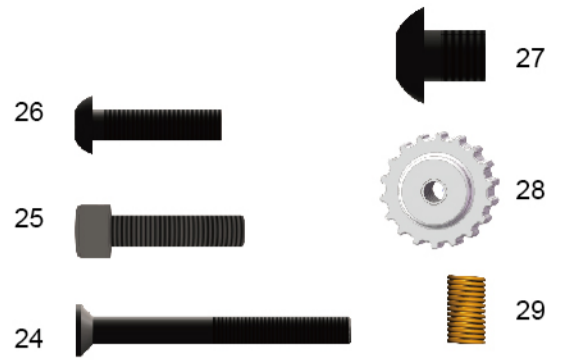


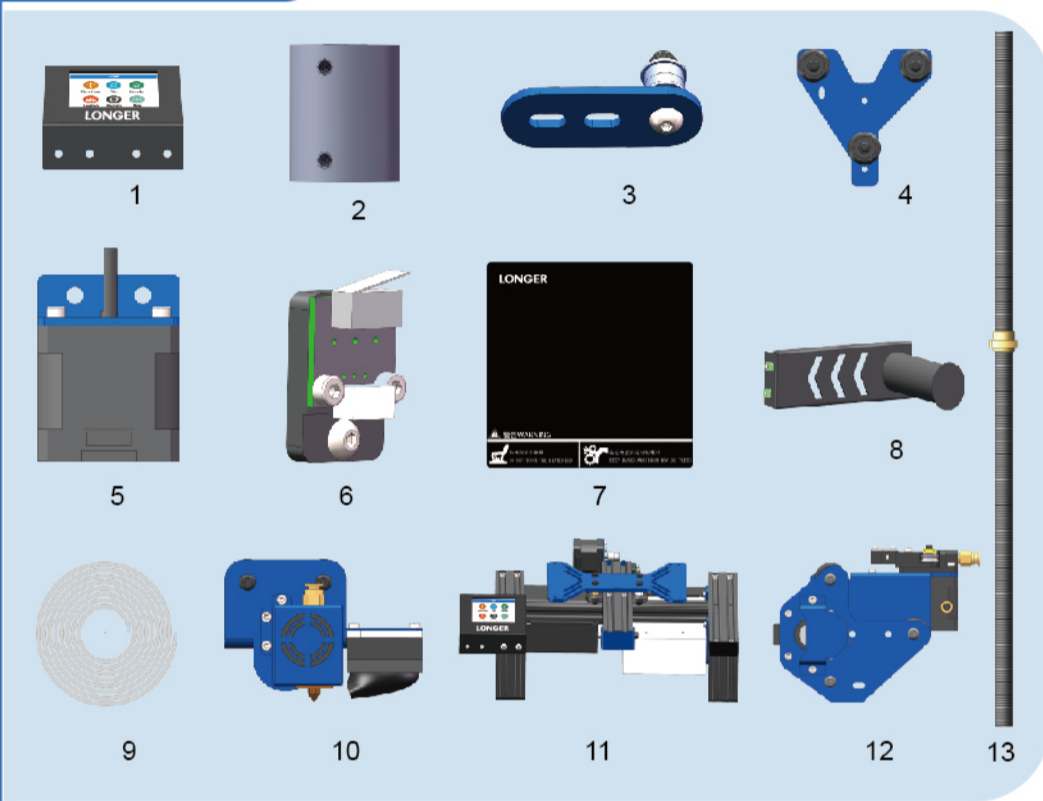
- 1 The picture on the right is the assembled LK 2 printer.
- 2 Before printing ,Pls must adjust the voltage of the switching power supply according to the local power standards (220V or 110V) , or the printer will be damaged .
- 3 The installation of the slicing software, the description of the machine interface,for more details about the machine operation tutorial, please refer to the electronic version of the manual in TF card.



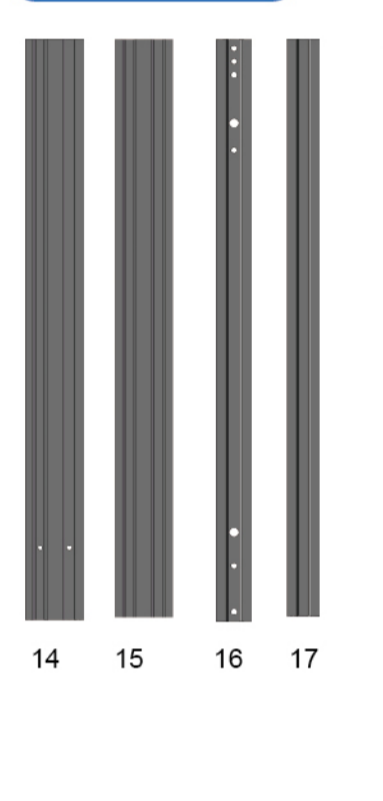
Screw



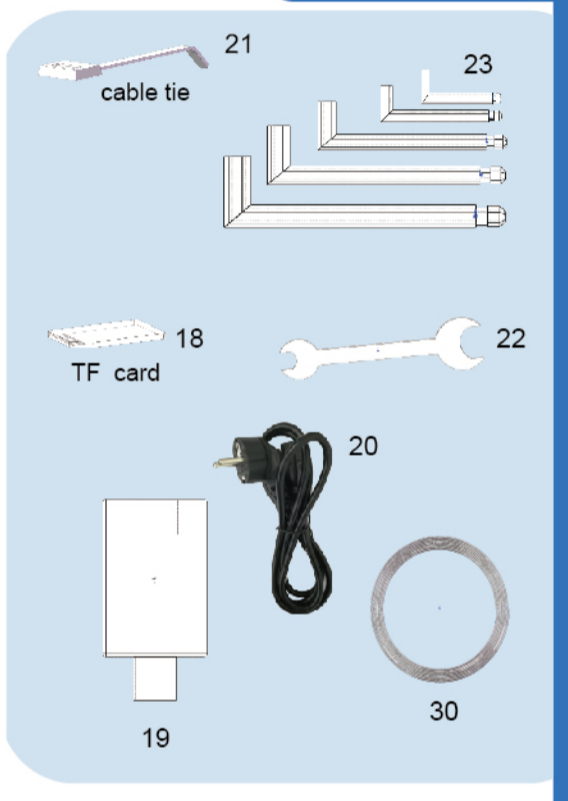
Components



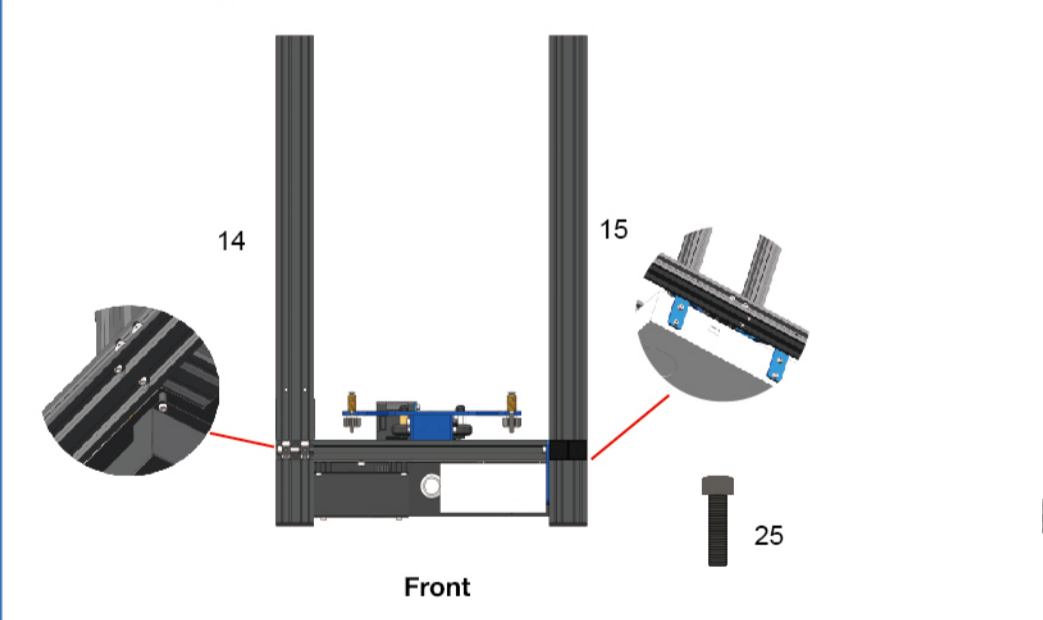
Sections



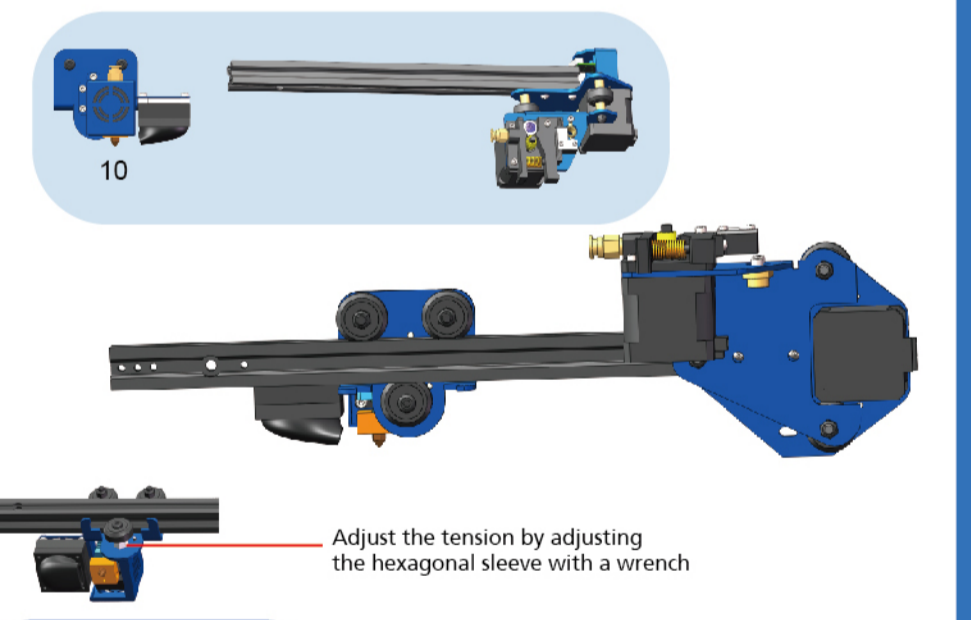
Accessories



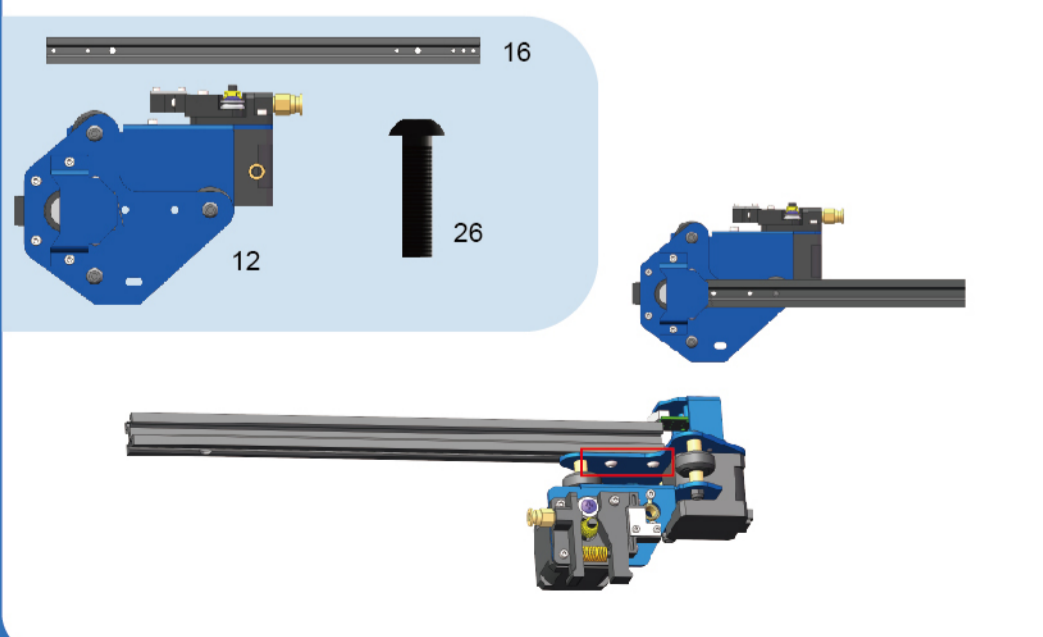
Step 1



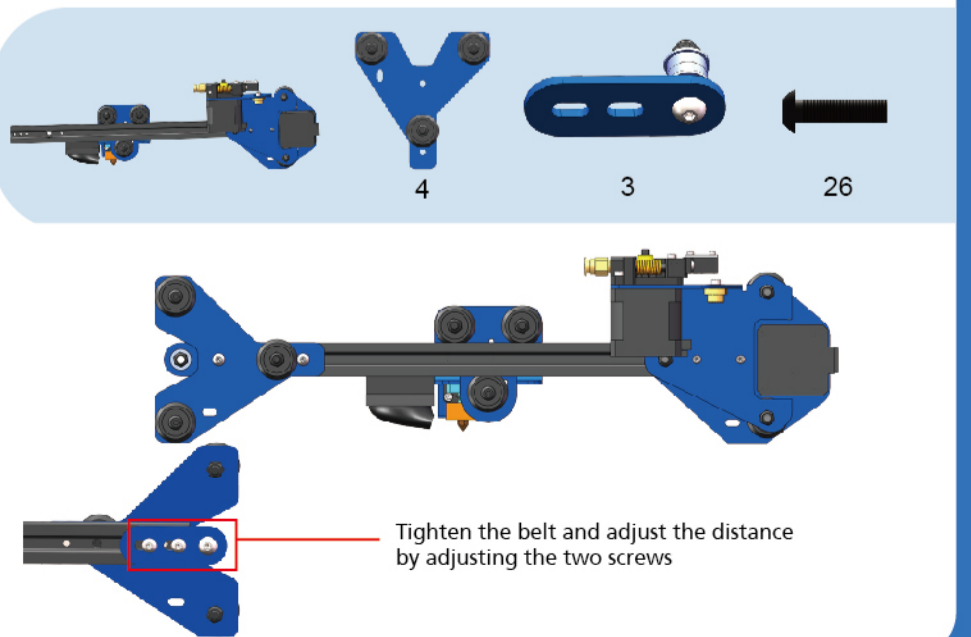
Step 3



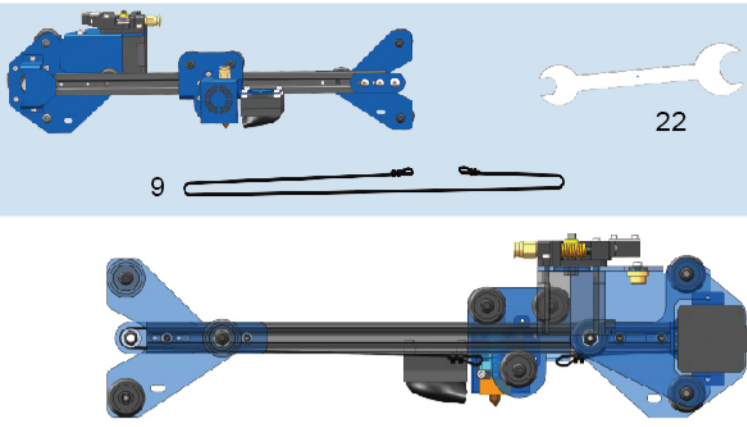
Step 2



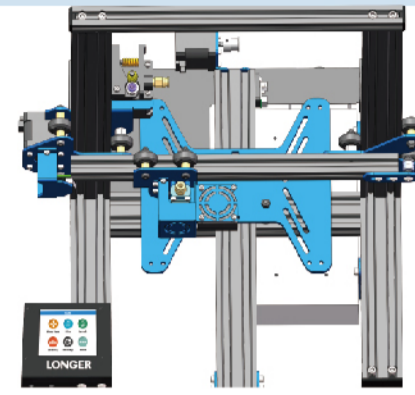
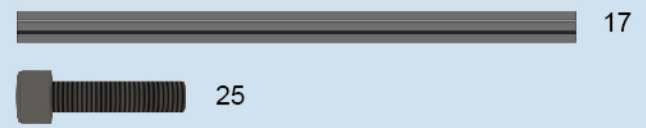
Step 4



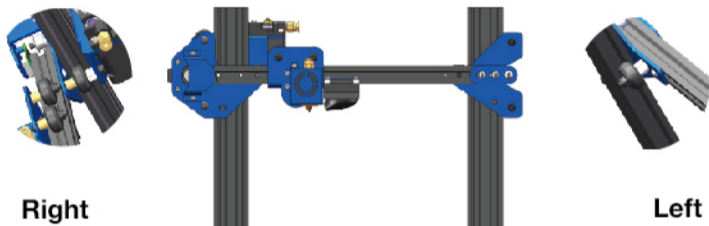
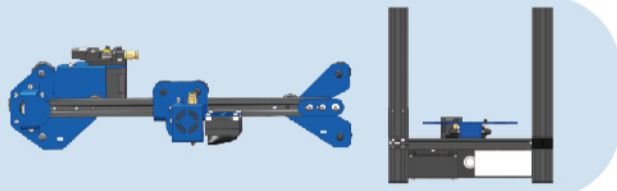
Step 5



Step 7



Step 6

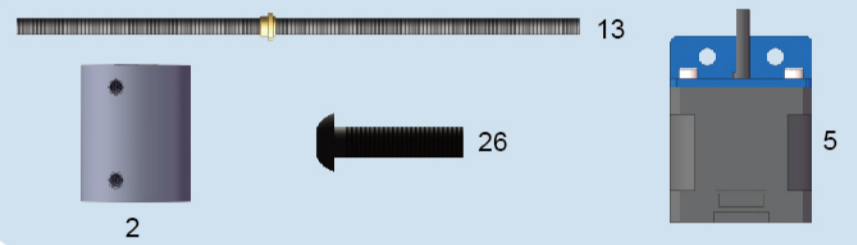


Right

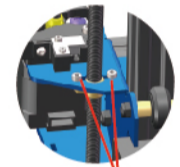
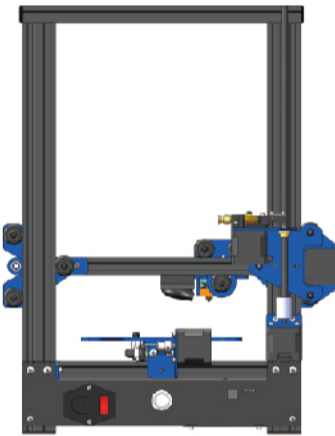
Left

1. Adjusting the distance by adjusting the left and right sides hexagonal sleeve.
2. The x-axis beam is smoothly assembled into the gantry.

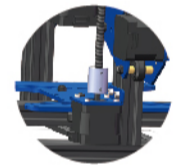
Step 8



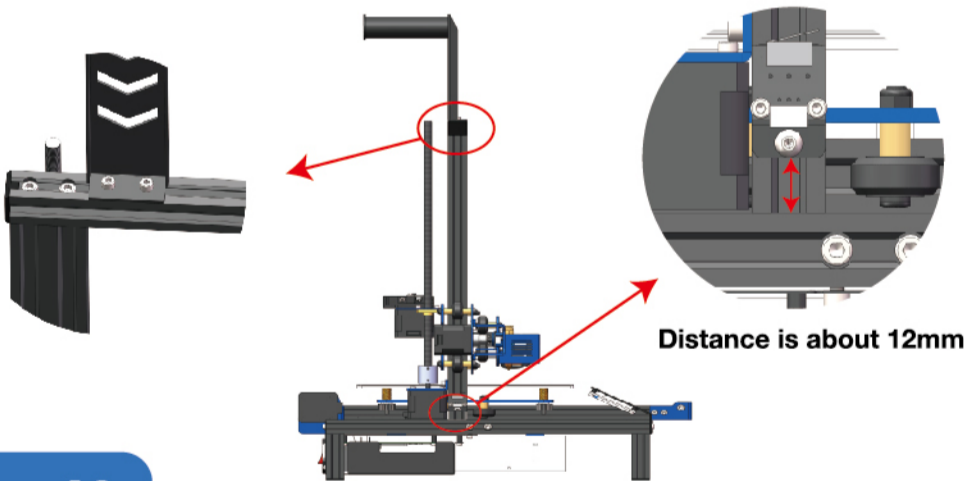
1. Assemble 5
2. Assemble 13 (Rotate the lead screw through the screw nut)
3. Assemble 2
4. Lock the screw of 2



Two screws do not much tight

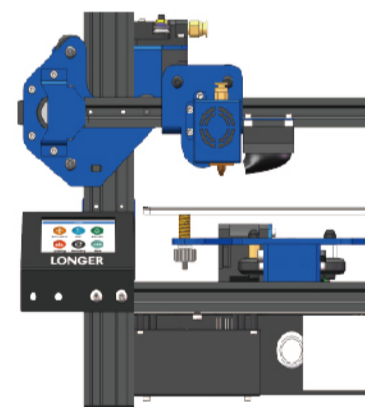


Step 9



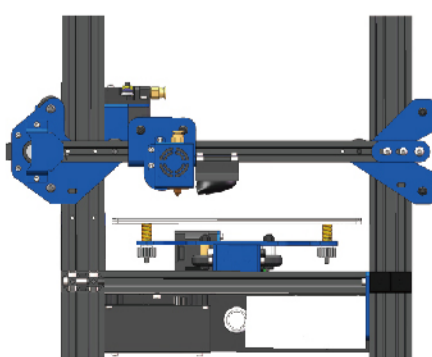
Distance is about 12mm

Step 11

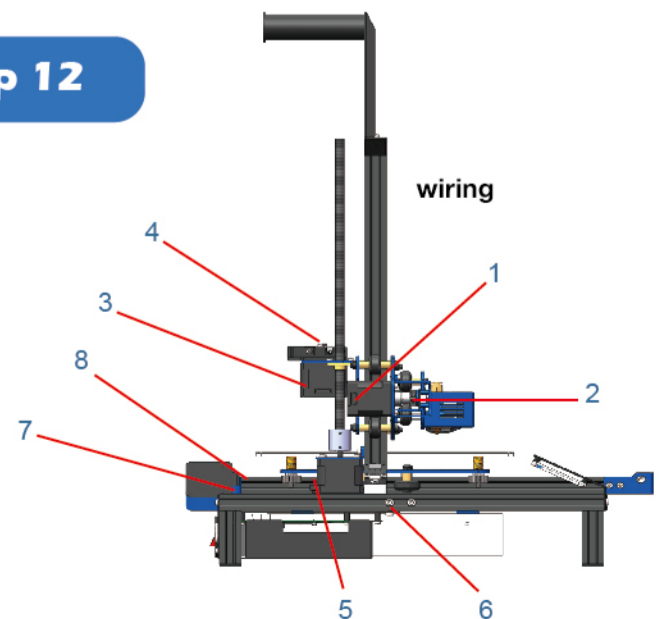


1. Left and right side profiles are available to install the screen
2. Connect the screen cable

Step 10



Step 12



1. X motor line
2. x limit switch
3. E motor line
4. e material cut detection
5. Z motor line
6. z limit switch
7. Y motor line
8. y limit switch